

# MASTER CLASS



**CIAN HOGAN**



CH 23

**LC**  
ENGLISH

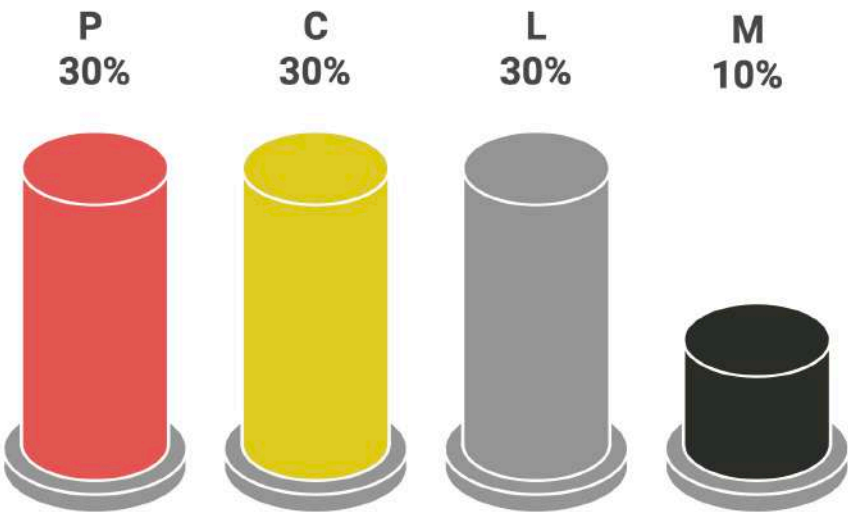
# The Marking Scheme

**Clarity of Purpose**  
Display a clear and purposeful engagement with the set task

**Coherence of Delivery**  
Sustain the response in an appropriate manner over the entire answer

**Efficiency of Language Use**  
Manage and control language appropriate to the task

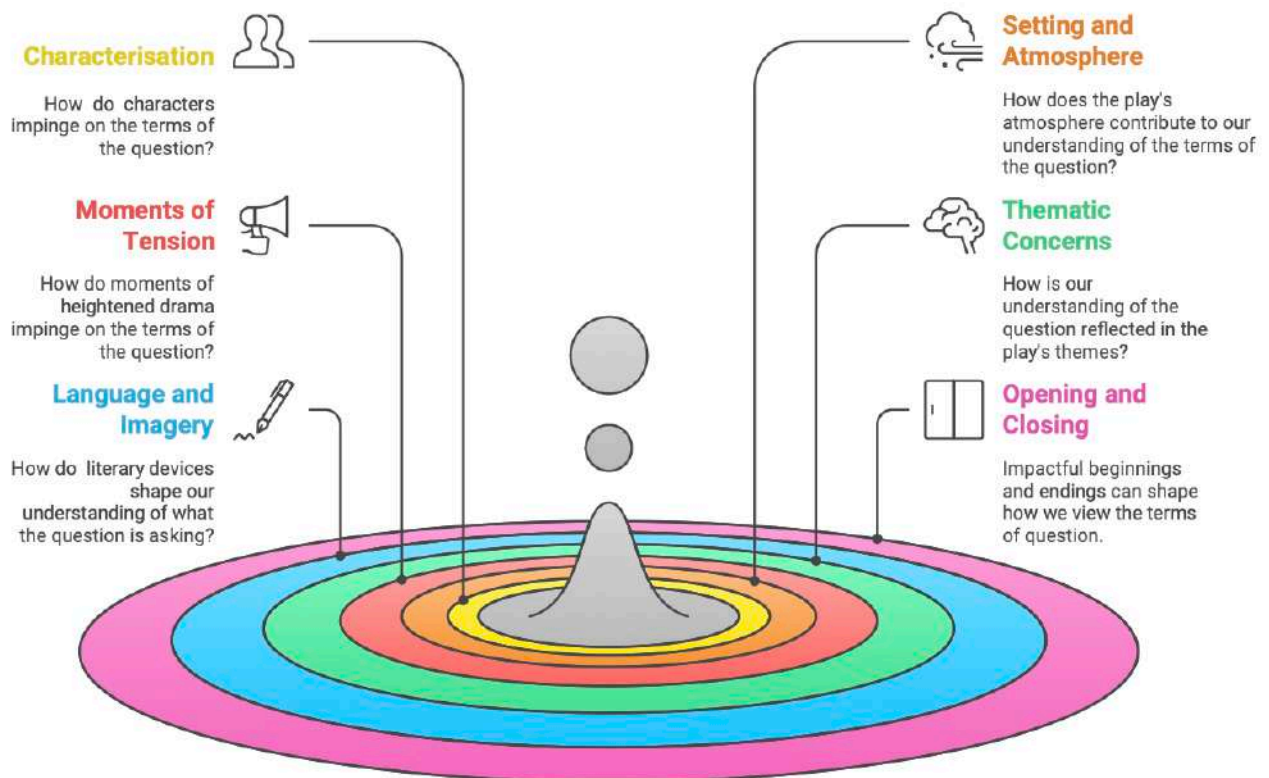
**Accuracy of Mechanics**  
Display levels of accuracy in spelling and grammar appropriate to the required/chosen register.



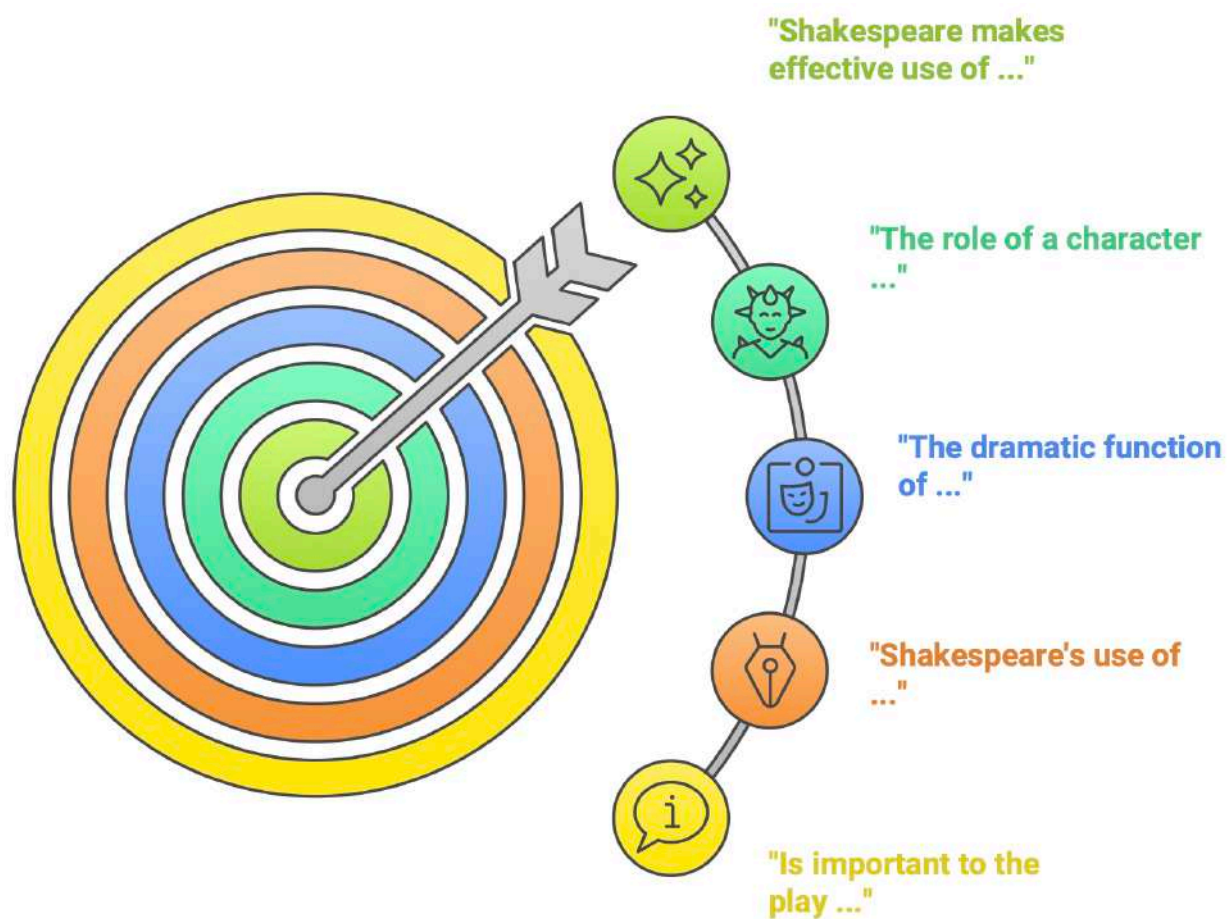
## Question Types

Type One	Literary Genre Question // narrative elements	<p>There are two types of Lit Genre Question</p> <p>(a) <b>Characters</b>: A production of Shakespeare's play, <i>King Lear</i>, in which the characters of Kent and the Fool do not appear has been proposed. Discuss the reasons why, in your opinion, the removal of each of these characters would or would not diminish Shakespeare's play, <i>King Lear</i>.</p> <p>"Shakespeare makes effective use of Lady Macbeth and the Witches to heighten the dramatic impact of his play <i>Macbeth</i> in a variety of ways." Discuss this statement, developing your response with reference to Shakespeare's play, <i>Macbeth</i>.</p> <p>(b) <b>Thematic word</b>: 2021 "<u>Chaos and confusion</u> are used <b>to great effect</b> throughout Shakespeare's play, <i>King Lear</i>."</p>
Type Two	Core Issues Question (Thematic and philosophical Concerns)	(i) "Shakespeare uses Hamlet's complex relationship with Gertrude to explore a variety of core issues in his play <i>Hamlet</i> . Discuss this statement, developing your response with reference to Shakespeare's play, <i>Hamlet</i> ."
Type Three	Language and Imagery	(ii) Discuss how Shakespeare's use of language, including imagery, plays an important part in developing our understanding of one of the following aspects of his play, <i>Macbeth</i> : <b>themes</b> ; <b>characterisation</b> ; <b>setting and atmosphere</b> . Develop your answer with reference to the text.
Type Four	Tragedy / Tragic Intensity	(ii) Discuss the elements of Shakespeare's play, <i>Hamlet</i> , that make it a surprisingly positive and hopeful drama. Develop your response with reference to Shakespeare's play, <i>Hamlet</i> .

# Literary Genre Questions

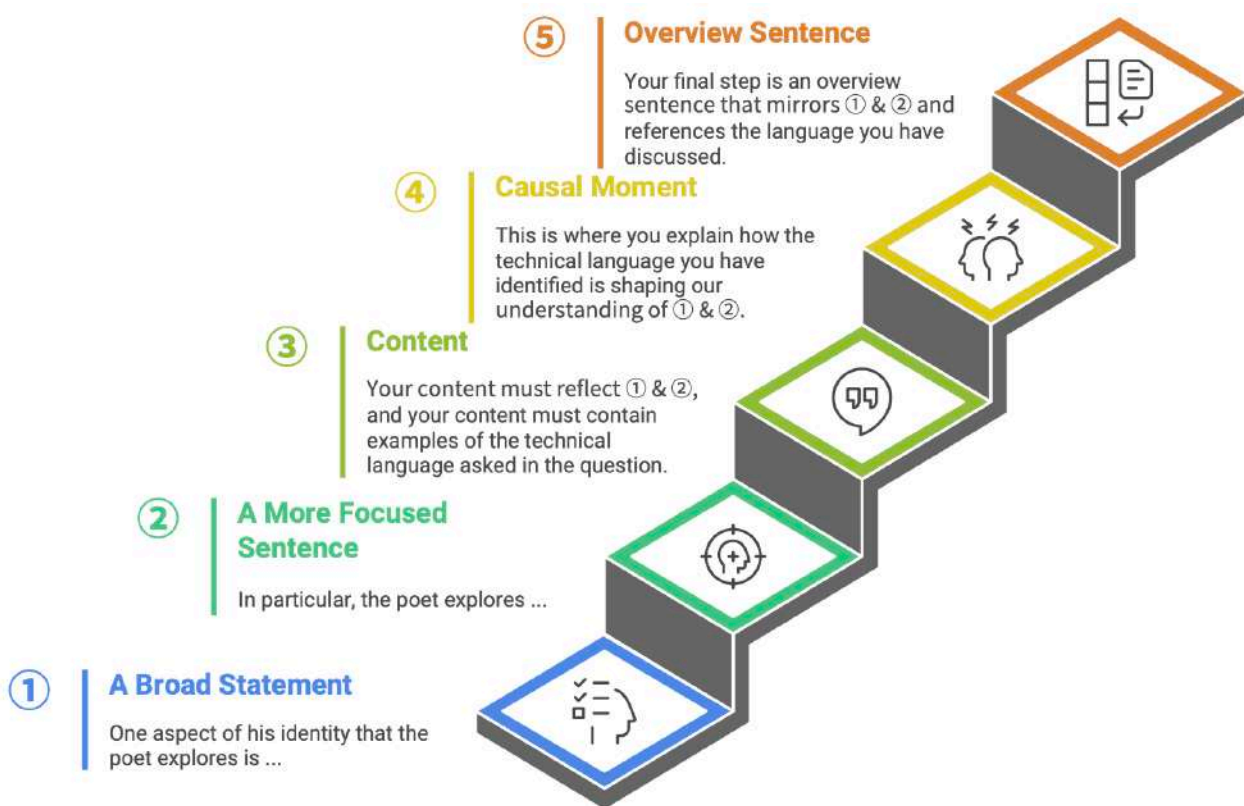


## Literary Genre Trigger Words





## The ①➡②➡③➡④⚡➡⑤ Method



① ➡ In any play, thematic and philosophical concerns shape the audience's engagement with the narrative. ② ➡ In "*Macbeth*", Shakespeare makes effective use of Lady Macbeth's character to expose **the corrosive nature of evil**. ③ ➡ We see this most clearly in Act One Scene Five, when she welcomes Duncan's "***fatal entrance***" and calls on the dark "***spirits that tend on mortal thoughts***" to strip her of all feminine restraint:

***“Unsex me here,  
And fill me, from the crown to the toe, top-full  
Of direst cruelty!”***

④ ➡ ⚡ This moment is significant **because** it shapes our understanding of how evil demands self-violation. ④ ➡ ⚡ To pursue cruelty, Lady Macbeth recognises that she must sacrifice her own identity. ④ ➡ ⚡ Furthermore, Lady Macbeth understands that Duncan’s murder will require her to become a crueler and more unnatural version of herself. ④ ➡ ⚡ Shakespeare conveys this evil in a complex and disturbing manner, using her characterisation to suggest a metaphysical connection between Lady Macbeth and the Witches. ④ ➡ ⚡ Her desire to be “**unsexed**” and to have her milk replaced “for gall” aligns her with the androgynous “**black and midnight hags**” who tempt her husband, placing her within the same moral and spiritual sphere. ③ ➡ By the play’s end, however, it is clear that the evil Lady Macbeth embraces ultimately destroys her. ③ ➡ In her final appearance, she is a woman tormented by the consequences of “**unnatural deeds**,” obsessively recalling violence she can no longer repress:

***“The thane of Fife had a wife: where is she now?”***

④ ➡ ⚡ The Doctor confirms what the audience has already suspected, that her “**disease**” lies beyond medical “**practice**,” as “**unnatural deeds / Do breed unnatural troubles**.” ④ ➡ ⚡ Her suicide provides final confirmation that **evil** is ultimately self-destructive. ⑤ ➡ So, Shakespeare uses Lady Macbeth’s character to direct our understanding of the devastating psychological consequences of engaging in evil.

**Core Issues**

**Language and Imagery**

**Tragedy Questions**